

22MM PLASTIC ROUND COMPLETE UNIT
COMBINATION: INDICATOR LIGHT WITH SMOOTH
LENSE ILLUMINATED WITH LAMP HOLDER BA 9S WITH
LAMP 130V AC/DC SCREW TERMINAL OPERATIONAL
VOLTAGE 220/230V AC WITH HOLDER WHITE

Actuator:

Design of the product		Complete unit round
Design of the operating mechanism		indicator light
Color / of the activation element		White
Material / of the activation element		plastic
Shape / of the activation element		Smooth lens
Number of switching positions		0
Product component / front ring		No
Product function / EMERGENCY STOP function		No

Holder:

Material / of the holder		Plastic
--------------------------	--	---------

Contact block/ lampholder:

Design of the electrical connection		screw-type terminals
Number of switching elements		0
Number of NC contacts / for auxiliary contacts		0
Number of NO contacts / for auxiliary contacts		0
Number of changeover contacts / for auxiliary contacts		0
Product function / positive opening		No
Number of lampholders		1
Execution of the mounting		BA 9s, with lamp
Product component / fluorescent materials		Yes
Product extension / optional / fluorescent materials		Yes

Accessories:

Product component / holder for 3 switching elements		No
---	--	----

General technical data:

Type of voltage / of the supply voltage / of light source		AC
Supply voltage / 1 / of the fluorescent material		
• at 60 Hz / for AC / rated value	V	230

• at 50 Hz / for AC / rated value	V	230
Voltage type / of operating voltage		AC/DC
Operating voltage / rated value		
• minimum	V	5
• maximum	V	400
Resistance against shock		
• for devices with incandescent lamp / according to IEC 60068-2-27		<= 30g
Resistance against vibration / according to IEC 60068-2-6		20 ... 200 Hz: 5g
Reference code		
• according to DIN EN 61346-2		P
• according to DIN 40719 extended according to IEC 204-2 / according to IEC 750		H
Tightening torque / of the screws in the bracket / maximum	N·m	1
Ambient temperature		
• during operating	°C	-25 ... +60
• during storage	°C	-40 ... +80
Protection class IP		IP66
climatic class / during the operating phase / according to EN 60721		3K6
Mounting type		front mounting
Shape / of the installation hole		round
Installation width	mm	28
Mounting diameter	mm	22
Mounting height	mm	11
Mounting depth	mm	49

Certificates/ approvals:

General Product Approval



[Special Test Certificate](#)

Shipping Approval



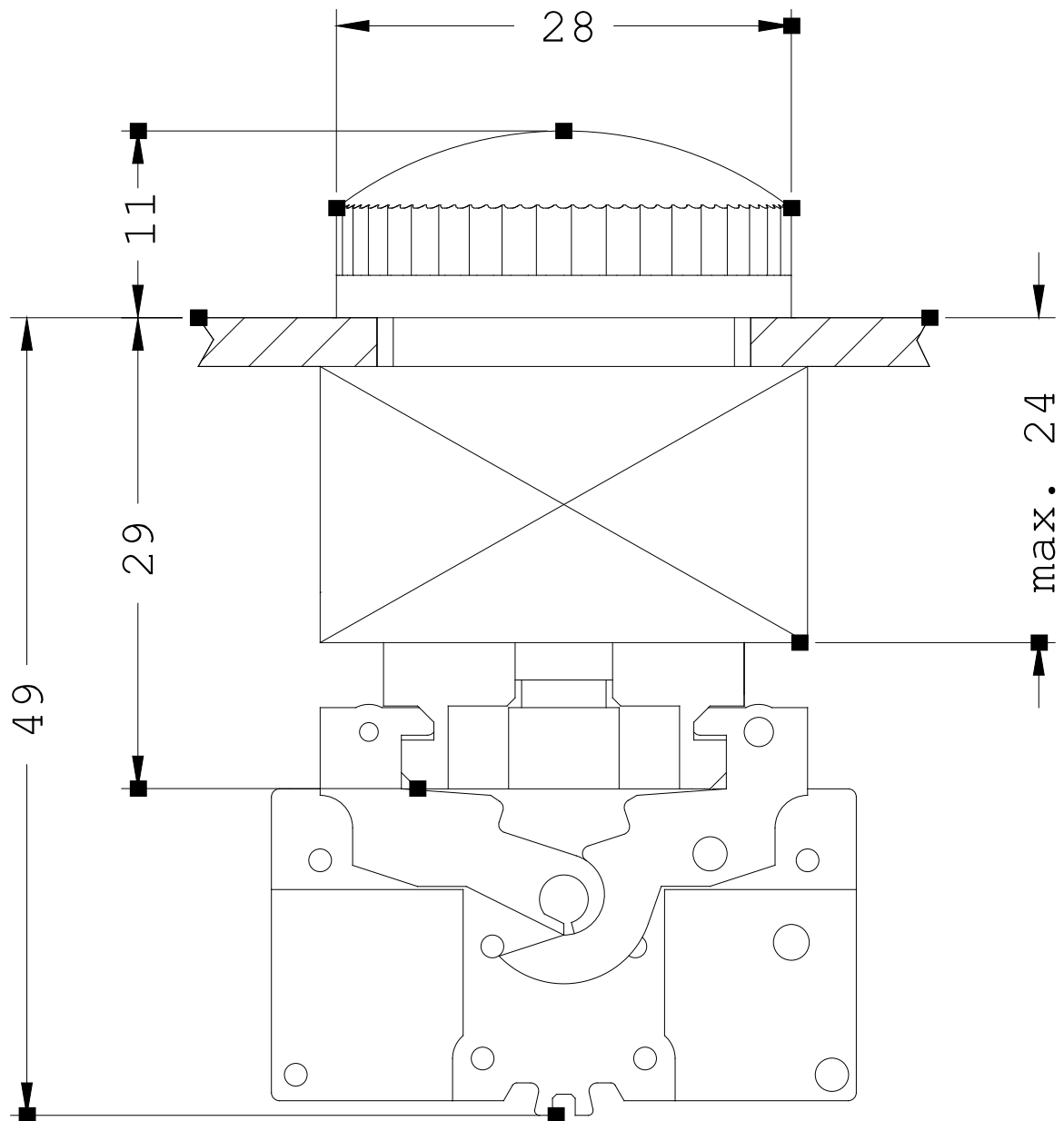
other

[Confirmation](#)

[other](#)

[Environmental Confirmations](#)

Further information:



last change:

Jul 7, 2014